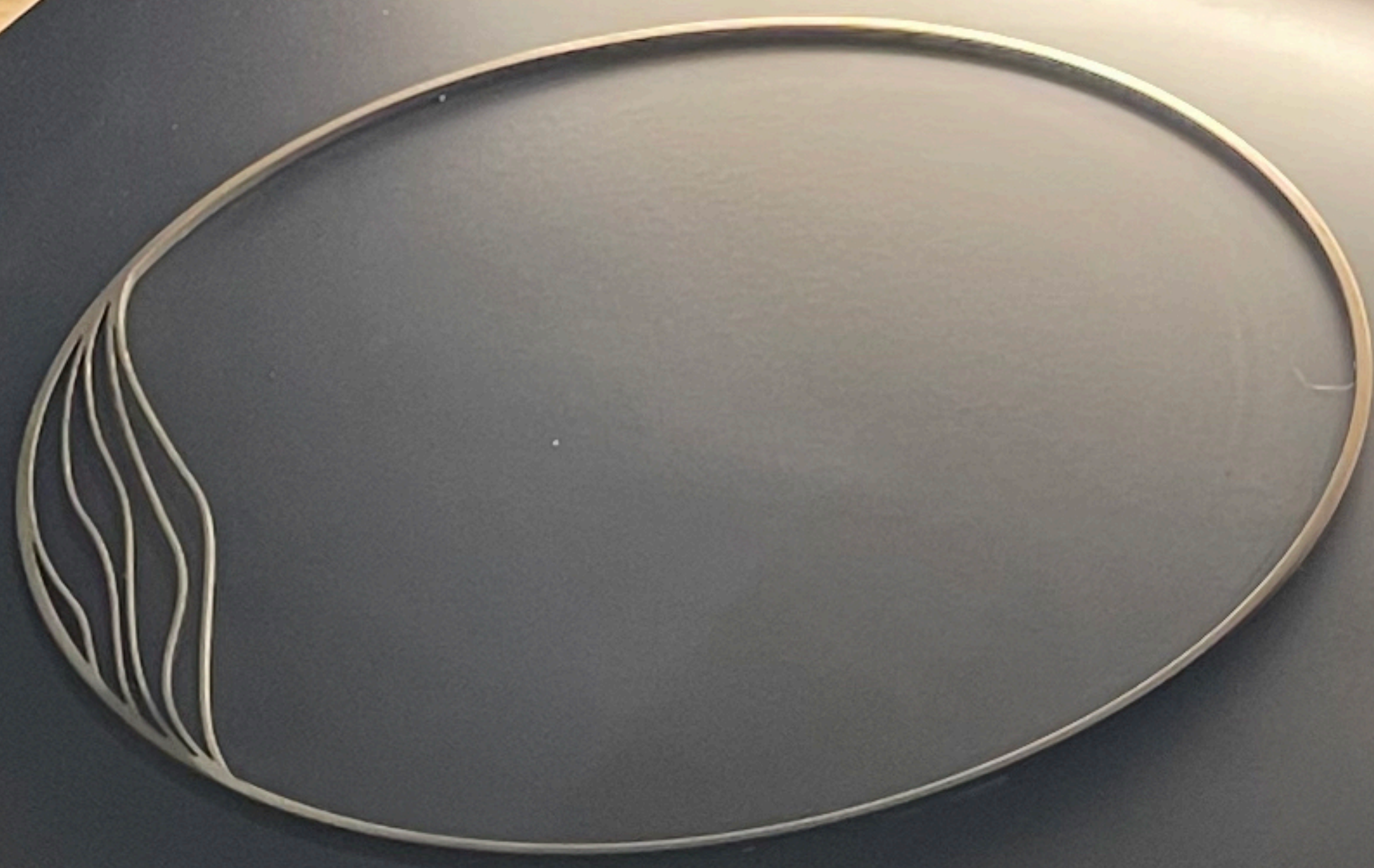


velvære

1023

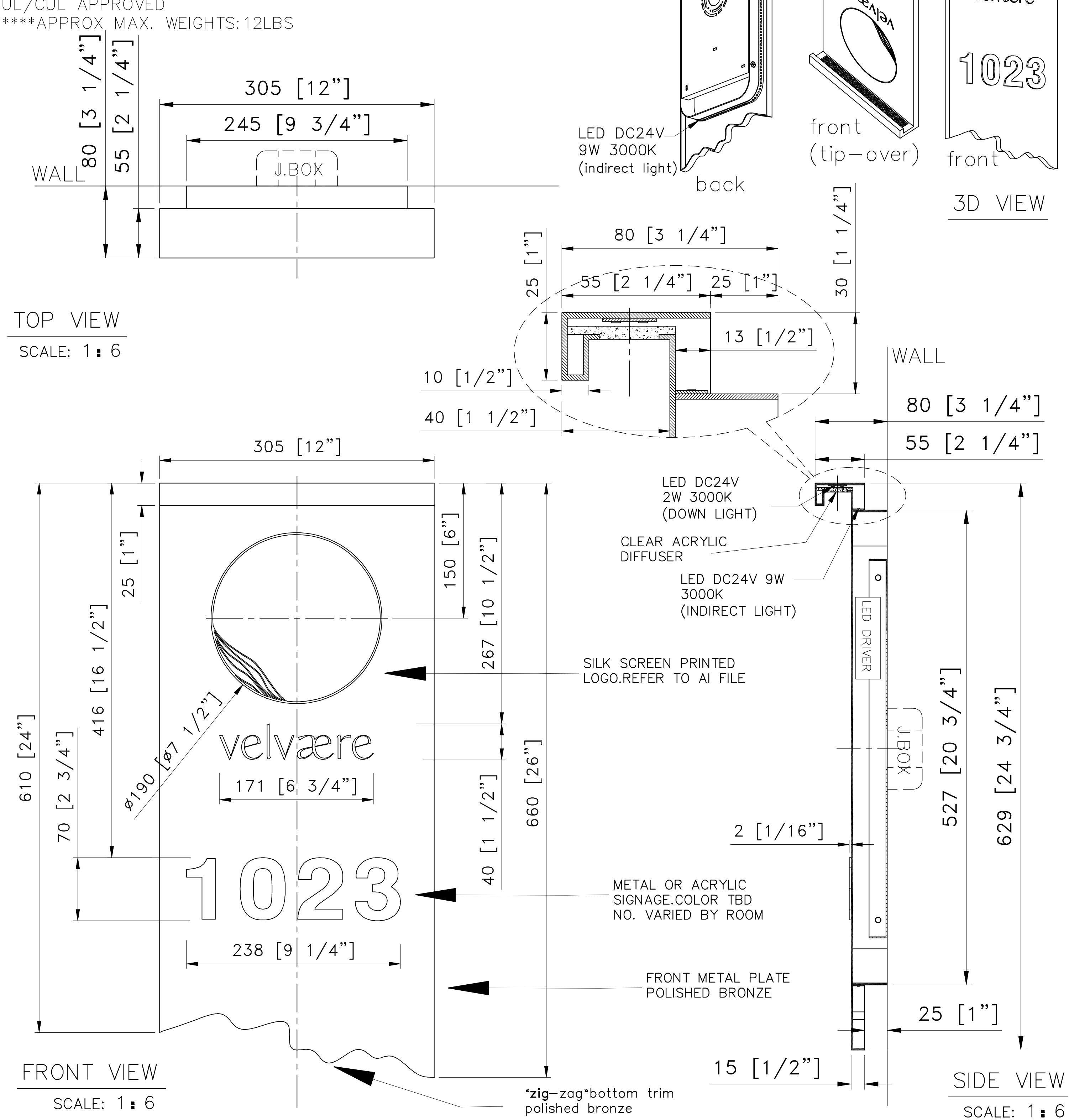
FRAGILE



velvære

1023

NOTES:
1)METAL:ALL EXPOSED METAL FINISH TO BE POLISHED BRONZE
2)DIFFUSER:GLEAR ACRYLIC.
3)LAMPING:INTEGRATED LED 9W(INDIRECT LIGHT)+2W(DOWN LIGHT)
3000K. NON DIMMABLE. W/DRIVER.120V.A.C.60 Hz
4)W/”Velvære”logo(silk screen print)+SIGNAGE(Varied by room)
5)HARD WIRED
UL/CUL APPROVED
****APPROX MAX. WEIGHTS:12LBS



CUSTOM UNIT ENTRY WALL SCONCE W/SIGNAGE/LOGO

ITEM NO:CEN-WS-0708 QTY:2000X

Approval: ☐ Date: _____

With comments: _____

Signed By: _____

Estimated Leads time are contingent upon receiving approved submittals and are subject to change

Les Industries CENTURY Industries Inc.

5645 Royalmount Ave.

Montreal, Quebec, Canada H4P 2P9

Tel:514-842-3933 Fax:514-842-7481

Toll free Canada only:1-877-842-3934

Date:2023/04/12 Rev: _____

(yyyy/mm/dd)

(yyyy/mm/dd)

Dwg. #

P 1/1

CENTURY

Lighting

joekrauslighting 

301-537-5808

joe@joekrauslighting.com

www.joekrauslighting.com